

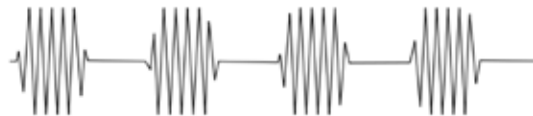
rural

NEUROTICA

vol. 3



Isochronic tones are regular beats of a single [tone](#) that are used alongside [monaural beats](#) and [binaural beats](#) in the process called [brainwave entrainment](#). At its simplest level, an isochronic tone is a tone that is being turned on and off rapidly. They create sharp, distinctive pulses of sound.

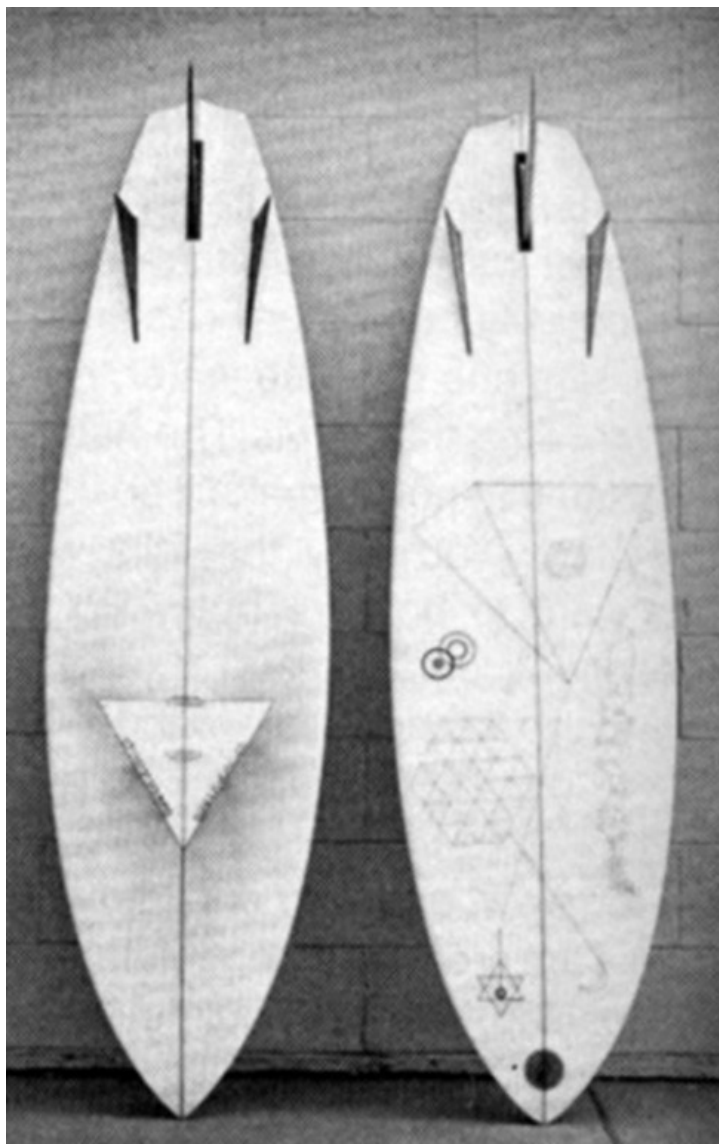






K H T
C H T

6 ACG





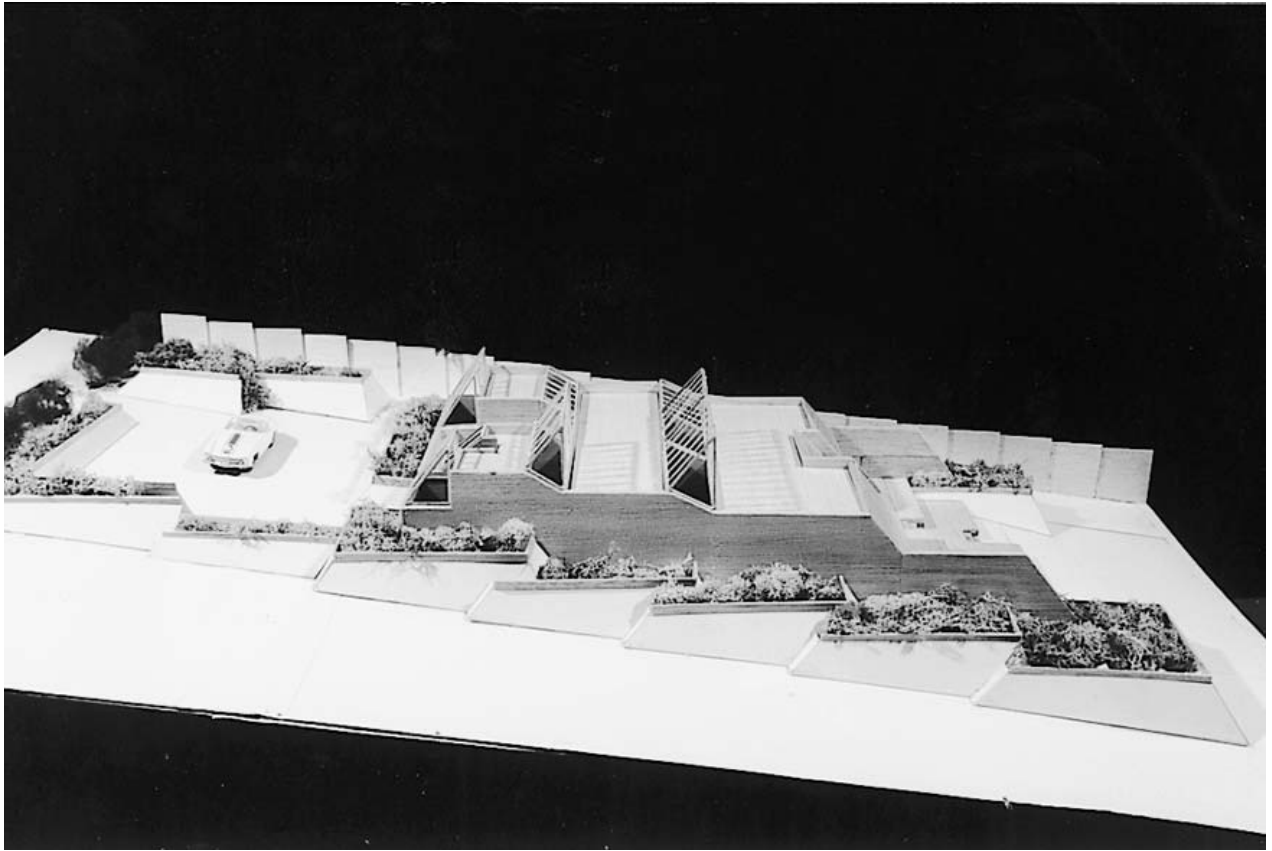
How Online Mobs Act Like Flocks Of Birds

A growing body of research suggests human behavior on social media is strikingly similar to collective behavior in nature.

The virtual world was unconstrained by the limits of physical space or human cognition, but it was anchored to commercial incentives. Once people had exhaustively connected with their real-world friend networks, the platforms were financially incentivized to help them find whole new flocks in order to maximize the time they spent engaged on site. Time on site meant a user was available to be served more ads; activity on site enabled the gathering of more data, the better to infer a user's preferences in order to serve them just the right content — and the right ads. People You May Know recommendation algorithms nudged us into particular social structures, doing what MIT network researcher Sinan Aral calls the “closing of triangles:” suggesting that two people with a mutual friend in common should be connected themselves.











be with me

Letter	Phonetic Word
A	Alpha
B	Bravo
C	Charlie
D	Delta
E	Echo
F	Foxtrot
G	Golf
H	Hotel
I	India
J	Juliet
K	Kilo
L	Lima
M	Mike
N	November
O	Oscar
P	Papa
Q	Quebec
R	Romeo
S	Sierra
T	Tango
U	Uniform
V	Victor
W	Whiskey
X	X-Ray
Y	Yankee
Z	Zulu

The Drake equation

In 1961, astrophysicist Frank Drake set out a formula to roughly estimate the number (N) of advanced, detectable civilisations likely to exist in the Milky Way galaxy:

$$N = R^* \times f_p \times n_e \times f_e \times f_i \times f_c \times L \quad \text{where}$$

R = the rate of star formation in the Milky Way*

f_p = the fraction of those stars with planetary systems

n_e = the average number of planets in each planetary system that can potentially support life

f_e = the fraction of planets that could potentially support life which actually do

f_i = the fraction of planets with life which develop intelligent life/civilisations

f_c = the fraction of these civilisations which develop technologies with signs detectable in space

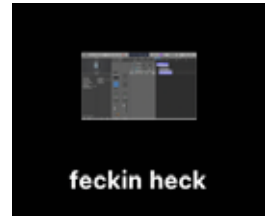
L = the length of time such civilisations release detectable signals into space

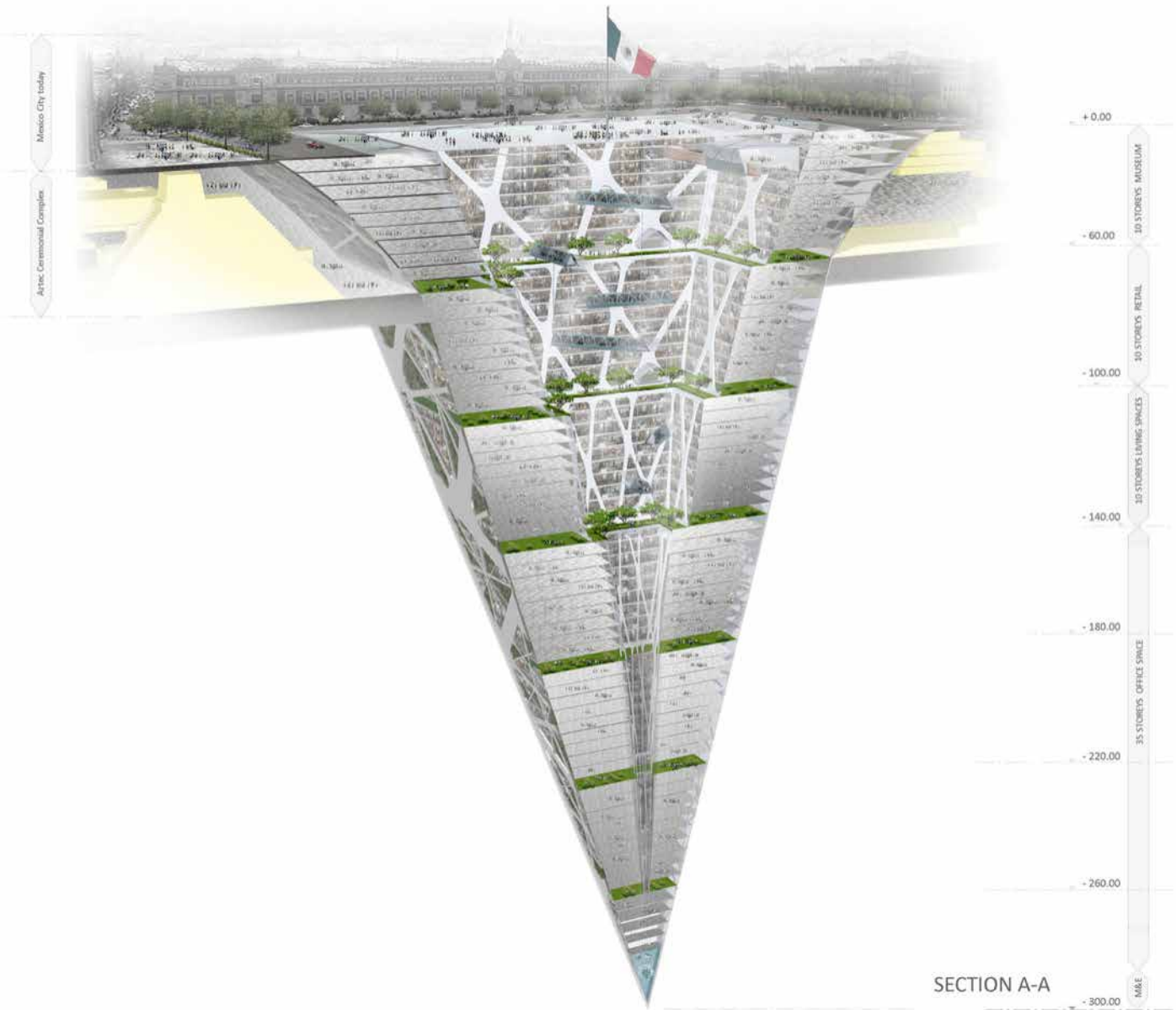
bbc.com · 13 min

Should extraterrestrial life be granted 'sentient' rights?

According to many of our cultural touchstones, there's only one thing for it if extraterrestrials ever take a cosmi...







quantum

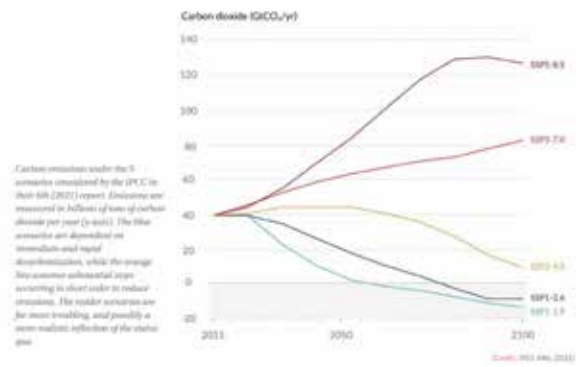
when two particles link together in a certain way

entanglement

no matter how far apart they are in space.



A Paris-based startup called Neoplants aims to harness the natural air-filtering properties of plants and turn them up to 11. By genetically engineering both a pothos (*Epipremnum aureum*) plant and its associated root microbiome, the team behind Neoplants created an organism they claim is capable of doing the work of up to 30 air purifiers. The company's first high-tech houseplant, called Neo P1, recently hit the market.





Lee Bontecou d. Nov. 8, 2022





Latitude

52.7431776

°

Longitude

-9.5345151

°

Altitude

0.958649

m





Physicists have designed a urinal that drastically reduces splashback

not if but when